

INSTRUCTION MANUAL

TypiFix™-System



Ship samples for testing Scrapie susceptibility (Codon 171, 136 or 154), spider lamb syndrome or porcine stress syndrome (PSS) to:

Gene Check, Inc.
1175 58th Ave
Suite 100
Greeley, CO 80634

For more information or to order DNA tissue sample collectors, please contact
Gene Check Inc:
1175 58th Ave, Suite 100
Greeley, CO 80634

Toll Free: 800-822-6740
Phone: 970-472-9951
Fax: 970-472-9956
E-mail: genecheck@genecheck.com
Website: www.genecheck.com

Trademarks™

TypiFix™ is a registered trademark of IDnostics AG.

Restrictions and Liabilities

Information in this document is subject to change, and does not represent a commitment by IDnostics AG. Changes made to the information in this document will be incorporated in new editions of the publication. No responsibility is assumed by IDnostics AG for the use or reliability of equipment that is not supplied by IDnostics AG or its affiliated dealers.

TypiFix™ Ear Tag and TypiFix™ Applicator Warranty

In the following TypiFix ear tag™ and TypiFix™ applicator are referred to as “products.”

IDnostics AG guarantees that the products you have received have been thoroughly tested and meet its published specifications.

This guarantee is valid for 24 months only if the product and functions have been used according to the instruction manual. No liability is accepted for loss or damage arising from the incorrect use of the products. IDnostics AG’s liability is limited to the repair or replacement of the products or refund of the purchase price at IDnostics AG’s option. IDnostics AG is not liable for any consequential damages.

IDnostics AG reserves the right to alter the specifications of the products without prior notice. This will enable us to implement developments as soon as they arise.

Read the Instruction Manual carefully before using the products to ensure that you obtain the best possible results.

General Precautions

The products should only be used by suitably qualified and trained personnel. The products should only be used for it’s intended purpose in accordance with the instructions contained in this manual. The use of the products in any manner that is not specified by IDnostics AG will void the warranty, and could cause damage to the product as well as cause possible injury the operator.

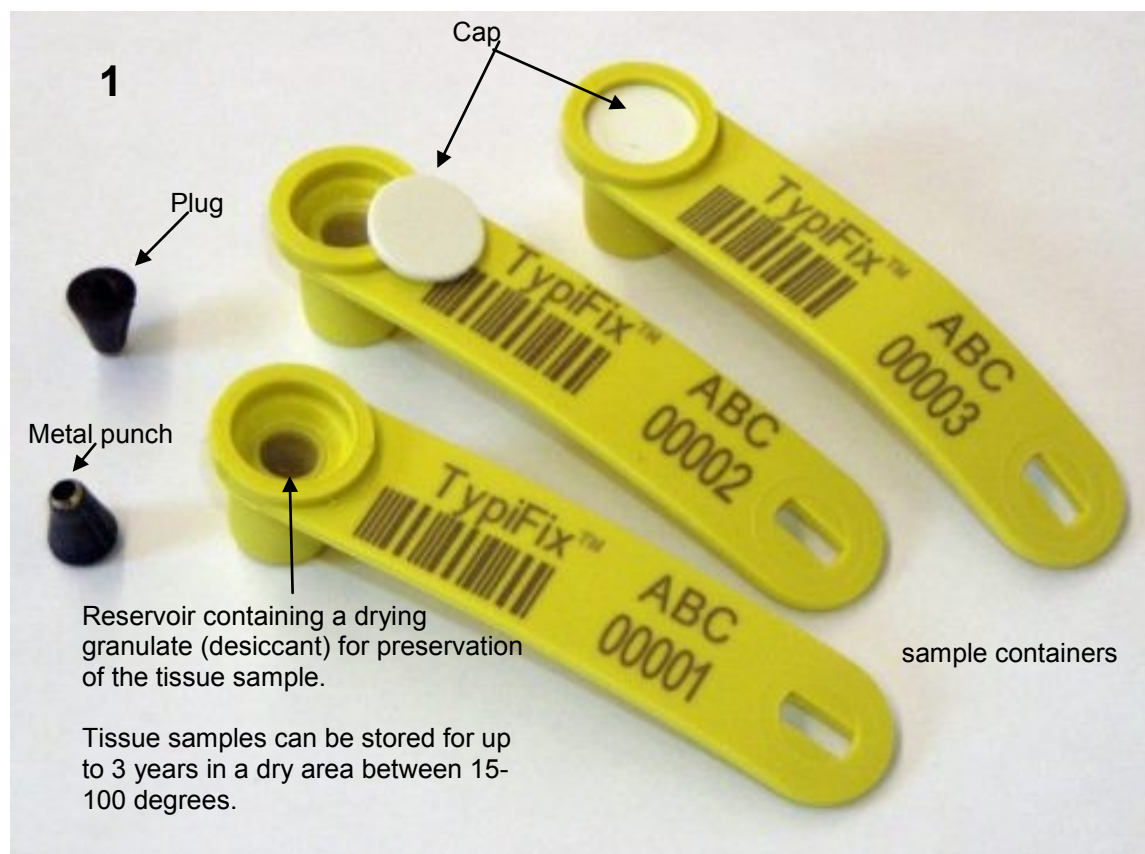
Keep out of the reach of children!

Description of the TypiFix™ sample collector

Collection of tissue samples with the TypiFix™ sample collector is reliable and easy.

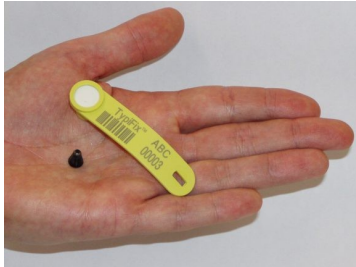
In contrast to other methods **no cooling of the sample is required**. The sample is pressed into a sample reservoir containing a drying granulate (desiccant) where the conservation process of the tissue samples immediately begins.

Tissue samples collected with the TypiFix™ sample collectors can be stored at room temperature for 3 years. (no cooling required).



Sample Collector

Correct loading of the pliers



Take one TypiFix™ sample collector and one plug.



Slide the plug onto the pin of the pliers as far as it will go. Only use the special pliers for TypiFix™ sample collectors.



The plug should fit snugly on the tip of the plier pin.



Insert the sample container deep into the cavity under the retainer clip.

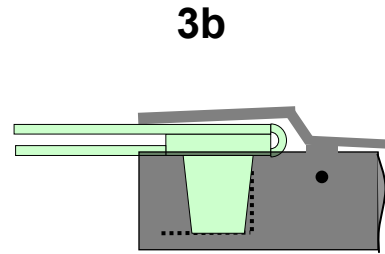
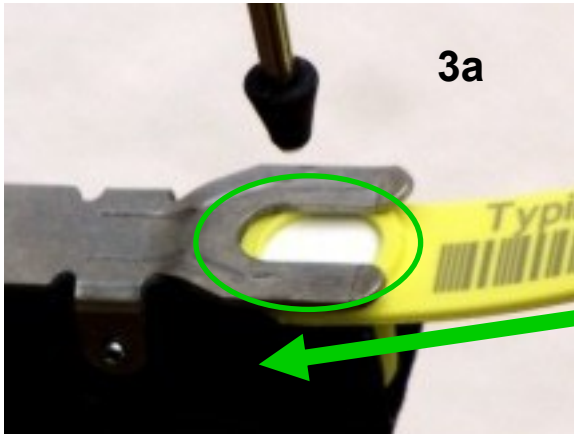


Ready for use.

Controlling of the correct positioning of the sample collector in the pliers

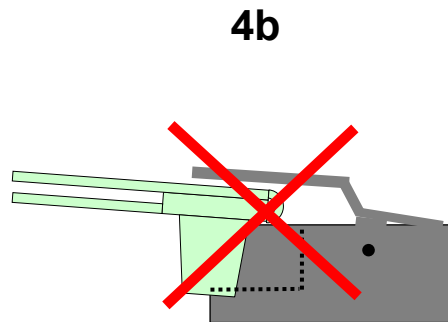
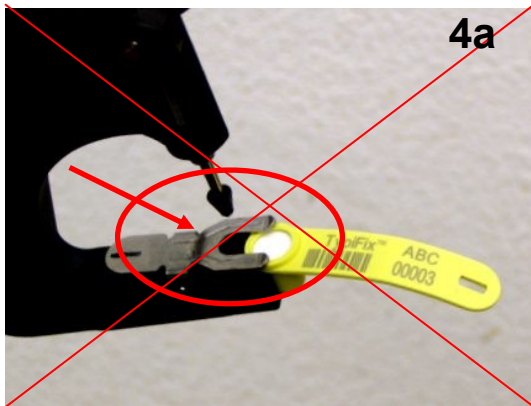
The tip of the conical punch must align within the center of the marked circle on the sample collector. Control the proper alignment by lightly squeezing the pliers until the two parts slightly touch each other. If necessary, adjust the sample container and control the proper alignment once more.

Correct



The sample container must be seated under the retainer clip (refer to images 3a and 3b). An incorrect alignment of the tag parts is depicted in images 4a and 4b.

Incorrect



Collection of tissue samples



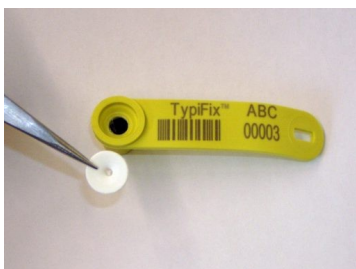
Put the animal's tissue between the two parts of the loaded pliers.

Ensure that the part of the ear/carcass that is to be penetrated is dry and free of dirt.

Squeeze quickly and firmly!



The black plug penetrates the cap and resides in the reservoir of the sample container.



The colored cap has no function anymore. It can be removed without effect on the preservation process. It is not necessary to remove this cap, but it can be helpful to make sure that the black plug is in fact in the reservoir and did not fall off of the pin before penetrating the tissue.

Mailing the Sample to the Gene Check

Send the loaded sample containers together with a sample submission form to:

Gene Check, Inc.– 1175 58th Ave, Suite 100– Greeley, CO 80634

** See Tips on last page for shipping and other tips.

If you have questions, please call: 800-822-6740 or 970-472-9951

Tips from Gene Check

1. Do not send the collectors in a regular envelope. The post office will run the envelope through a labeling machine which will cause the envelope to tear if there is something bulky inside. We have received envelopes with a few or all of the collectors missing due to this problem.
2. Removing the colored cap after collection (see page 6) is a good idea. We have had a few instances where the black plug was not present when we received the collection cup at the lab. Therefore, there was not tissue to test. Our best guess is that the plug may have fallen off of the pin prior to penetrating the tissue or did not get punched clear through the ear and into the collection cup. You will be able to see if this has happened if you remove the colored cap. It will be obvious if the black plug is in the collection cup or not.
3. Because the collectors contain a drying agent, the tissue you have collected is preserved for up to 3 years. Simply keep the containers dry and store at room temperature until you are ready to ship them to us. There is no need to ship via overnight or 2 day shipping for this reason. Feel free to use inexpensive shipping methods if you prefer.
4. Test results are typically completed 3-5 business days after the day we receive the samples.
5. If we have your contact information, we will contact you the day the results are done via phone, fax or e-mail. The original stamped certificate will go out to you in the mail within 1-2 business days of test completion.

Contact

Gene Check, Inc.
www.genecheck.com
email: genecheck@genecheck.com
Toll Free: 800-822-6740
Phone: 970-472-9951
Fax: 970-472-9956