



1. Separate the two parts of the ear tag.



2. Slide the male part onto the pin.



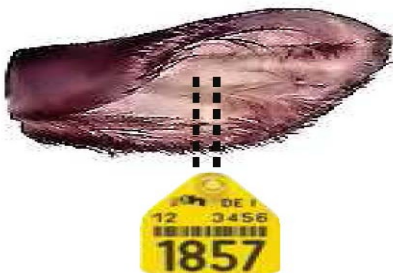
3. Snap the female portion of the ear tag into the collection cup and slide it under the metal clip. Snip the 2 thin strands of plastic that are connecting the back of the ear tag to the collection cup.



4. Attach the collection cup tab to the brass pin on the underside of the applicator head



5. The Tissue/DNA Ear Tag is ready for application.



6. Place the applicator with the installed ear tag over the animal's ear in the desired position (example in the picture above) when positioned to your satisfaction; squeeze the applicator handles to push the punch piece and male portion of the ear tag through the ear and down into the back side of the ear tag and then into the collection cup.



7. After application of the ear tag, release the applicator handles and pull it away with a firm action. The collection cup will separate from the ear tag and remain in the applicator.



8. The green punch piece should now be solidly lodged in the collection cup. Write any other identification numbers you wish on the tab and send the sample and a test submission form to Gene Check for testing.